

Christmas tree and holiday decoration safety

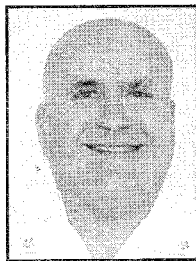
As we move into the Christmas season people begin decorating their homes and work places. Many times these decorations include festive candles and electric decorations. In this month's article, your firefighters want to draw your attention to Christmas tree and decorating safety.

- **Selecting a Tree for the Holiday**

Needles on fresh trees should be green and hard to pull back from the branches, and the needle should not break if the tree has been freshly cut. The trunk should be sticky to the touch. Old trees can be identified by bouncing the tree trunk on the ground. If many needles fall off, the tree has been cut too long, has probably dried out, and is a fire hazard.

- **Caring for Your Tree**

Do not place your tree close to a heat source, including a fireplace or heat vent. The heat will dry out the tree, causing it to be more easily ignited by heat, flame or sparks. Be careful not to drop or flick cigarette ashes near a tree. Do not put your live tree up too early or leave it up for longer than two weeks.



DAVE PUCCETTI
FREDERICK-FIRESTONE
FIRE PROTECTION DISTRICT

Keep the tree stand filled with water at all times.

- **Disposing of Your Tree**
Never put tree branches or needles in a fireplace or wood burning stove. When the tree becomes dry, discard it promptly. The best way to dispose of your tree is by taking it to a recycling center or having it hauled away by a community pick-up service.

Holiday Lights

- **Maintain Your Holiday Lights**
Inspect holiday lights each year for frayed wires, bare spots, gaps in the insulation, broken or cracked sockets, and excessive kinking or wear before putting them up. Use only lighting listed by an approved testing laboratory.
- **Do Not Overload Electrical**

Outlets

Do not link more than three light strands, unless the directions indicate it is safe. Connect strings of lights to a UL approved extension cord before plugging the cord into the outlet. Be sure to use the correct extension for the correct application. Make sure to periodically check the wires - they should not be warm to the touch.

- **Do Not Leave Holiday Lights on Unattended**

Never leave your holiday lights unattended. Do not leave your home until all the Christmas lights and decorations have been shut off. This will help prevent a fire if one of the decorations or extension shorts out.

Holiday Decorations

- **Use only nonflammable decorations**
All decorations should be non-flammable or flame-retardant and placed away from heat vents.

- **Never put wrapping paper in a fireplace.**

It can throw off dangerous sparks and produce a chemical buildup in the home that could cause an explosion.

- **Artificial Christmas trees**

If you are using a metallic or artificial tree, make sure it is flame retardant.

Candle care

- **Avoid using lit candles**
If you do use them, make sure they are in stable holders and place them where they cannot be easily knocked down. Never leave the house with candles burning.
- **Never put lit candles on a tree**
- **Do not go near a Christmas tree with an open flame - candles, lighters or matches.**

Finally, as in every season, have working smoke alarms installed on every level of your home, test them monthly and keep them clean and equipped with fresh batteries at all times. Know when and how to call for help.

Have a Fire Safe Holiday Season!

FARMER & MINNER

SERVING CARBON VALLEY SINCE 1930

50¢