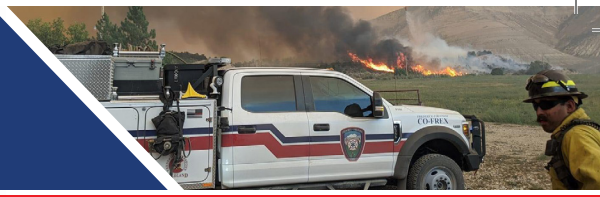




Just the Facts

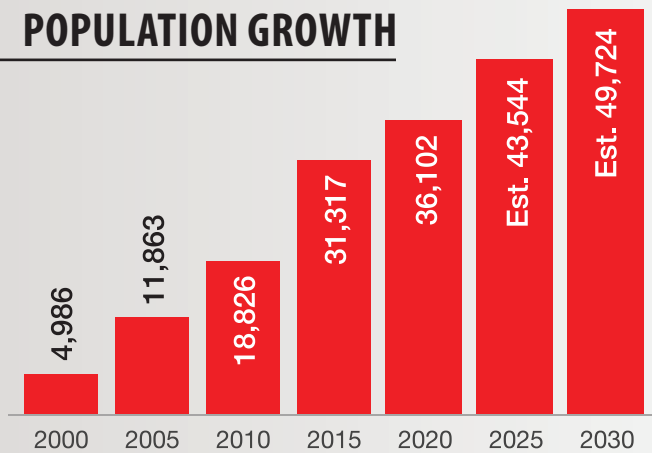
FREDERICK-FIRESTONE FIRE DISTRICT



// With FFFD's service population and emergency call volume rapidly increasing year after year, the only way to protect response times will be to strategically add equipment, apparatus, and facilities. //

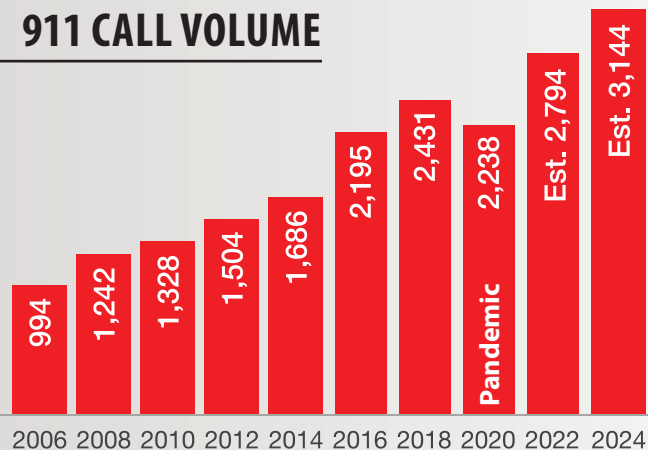
— Butch A. Walb, Board President
Frederick-Firestone Fire District

POPULATION GROWTH



In just the past 10 years alone, FFFD's service population has doubled. This rapid growth is directly impacting emergency call volume.

911 CALL VOLUME



FFFD's call volume has more than tripled since 2006 and will continue to increase as the service population grows.

- ✦ Frederick-Firestone Fire District's service population has doubled over the past 10 years and is projected to continue rising.
- ✦ FFFD currently protects more than 36,000 residents, 9,685 family homes, and 421 commercial and industrial properties in a 36-square-mile area.
- ✦ There are 30 planned residential development projects within the Fire District that comprise more than 11,600 family dwelling units, including senior citizen housing. More than 90 commercial projects are also currently in the planning phase or being constructed.
- ✦ An increase in the service population, coupled with an aging population, is driving up emergency call volume.
- ✦ The Fire District's call volume has tripled over the past 15 years, with 58% of those calls currently involving medical emergencies.
- ✦ To protect response times and maintain emergency services, FFFD is considering placing a \$19.8 million bond measure on the May 2022 ballot.
- ✦ Proceeds of the proposed bond measure would be used to:
 - Address health, safety, and energy efficiency improvements at FFFD's three oldest fire stations
 - Connect the District's Administrative Building to public sanitation and replace an outdated, inefficient HVAC system
 - Construct and equip two new fire stations, one in Frederick and one in Firestone
- ✦ The estimated net tax impact of the voter-approved bond measure is \$3.41 per month for a \$400,000 home.
- ✦ No action will be taken until the Fire District gathers additional public input.

Service Area & Station Locations

FFFD'S SERVICE AREA INCLUDES:

- Highway 52, 119 & 66
- 81 High-Hazard Occupancies
- Interstate I-25
- 9 Churches
- 29 Parks, Open Spaces & Trails
- Recreation Areas

FFFD'S AVERAGE RESPONSE TIME



6 Minutes and 5 Seconds

TYPES OF CALLS



- | | |
|---|---|
| 58% | 42% |
| <ul style="list-style-type: none"> Emergency Medical Injuries Strokes Cardiac Arrests Lacerations Convulsions/Seizures Psychiatric Problems Overdoses/Poisoning Choking Other Emergencies | <ul style="list-style-type: none"> Fire Incidents Traffic Accidents Hazardous Materials Calls Other Emergencies |

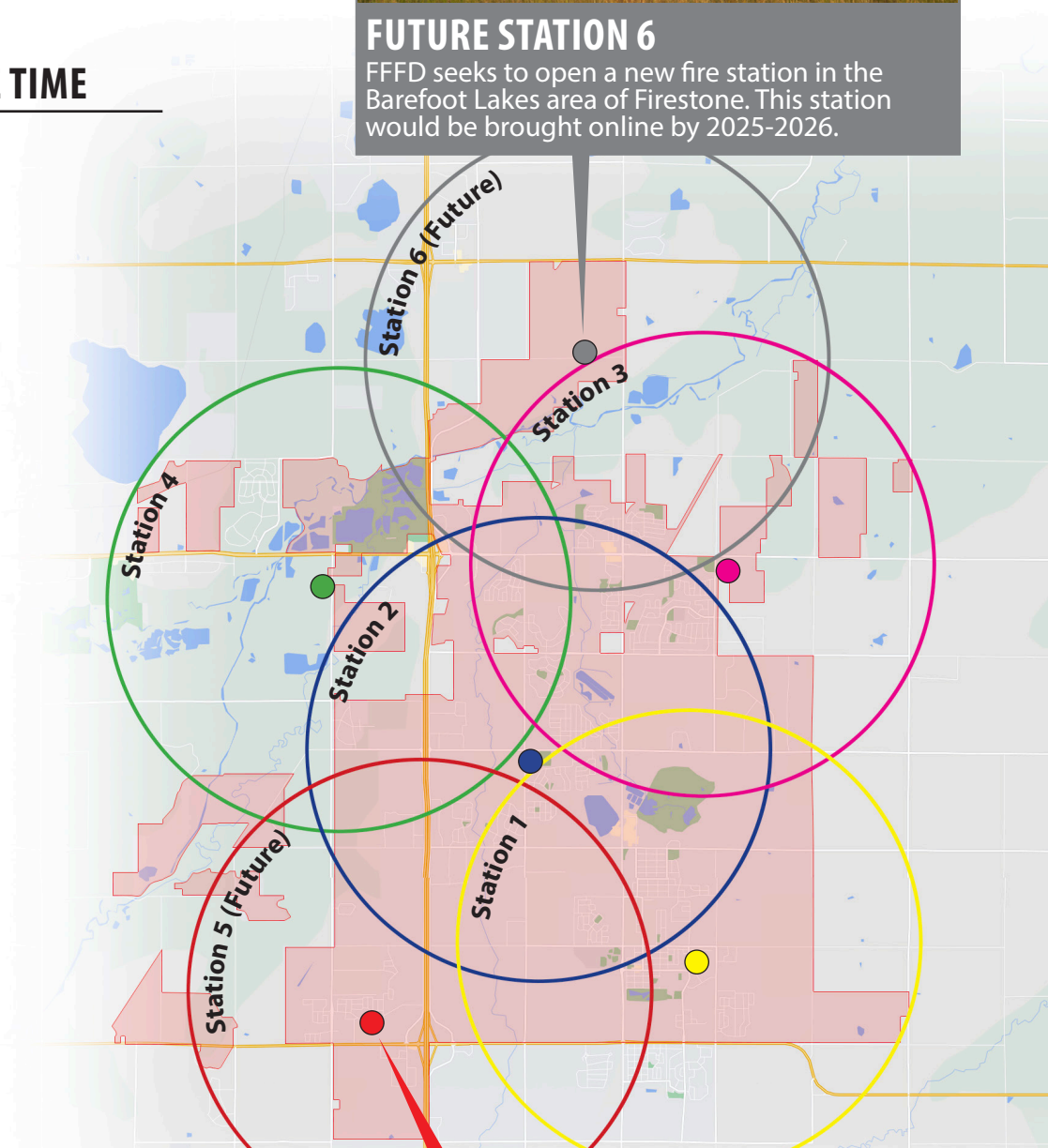
SERVICE AREA

- | | | | |
|---|----------------------------------|---|--|
|  | 9,685
Family Homes |  | 421
Commercial & Industrial Properties |
|  | 62
Apartment Complexes |  | 14
Public & Private Schools |



FUTURE STATION 6

FFFD seeks to open a new fire station in the Barefoot Lakes area of Firestone. This station would be brought online by 2025-2026.



FUTURE STATION 5

FFFD seeks to open a new fire station in the Wyndham Hill area of Frederick. This station would be brought online by 2022-2023.